



*Your Roof. For Life!
On Time and Complete!™*



**METAL ROOFING, METAL PANELS,
AND METAL BUILDING SOLUTIONS**



*Your Roof. For Life!
On Time and Complete!™*

EXPOSED FASTENER

MasterRib..... 3
 7/8 Corrugated..... 4
 Union Rib..... 4
 ValuRib..... 5
 1-1/4" & 2-1/2" Corrugated..... 6
 5V..... 7
 R/PBR/IR Panel..... 8
 M Panel..... 9

**ARCHITECTURAL
STANDING SEAM**

Advantage-Lok II..... 10
 SL150..... 11

**STRUCTURAL
STANDING SEAM**

SL175..... 12
 ML150..... 13
 ML200..... 14
 TS-324..... 15

SOFFIT/FLUSH PANELS

FL100..... 16

WARRANTIES

Warranties..... 17

COLOR CHARTS

Residential & Post Frame..... 18-19
 Commercial..... 20-21

SYSTEM COMPONENTS

Metal Roofing System Components..... 22

**ROOF EDGES AND FLASHING
FOR ASPHALT ROOFS**

Roof Edges and Flashing..... 23

METAL BUILDINGS

Pre-Engineered Metal Buildings..... 24-25
 Metal Building Components..... 26
 Mini Storage Solutions..... 27

TRAINING AND SALES TOOLS

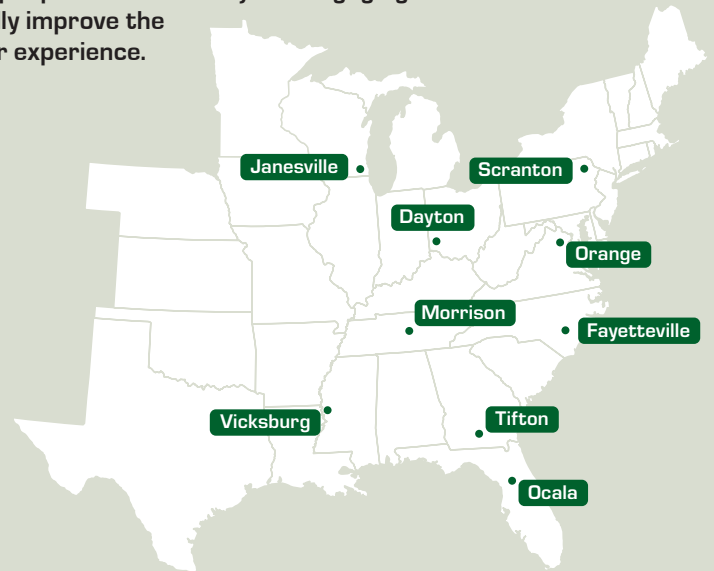
MasterQuote Online Order System..... 28
 MetalPro Contractor Program..... 29
 Install Videos and Apps..... 30

**Union Corrugating Company,
an industry leader in metal
roofing materials and supplies.**



Union Corrugating serves the residential, commercial, and agricultural roofing and siding markets from strategically located manufacturing facilities. Since 1946, Union has weathered the test of time, and we stand behind all of our products with some of the best warranties in the business.

Our mission is to be the most convenient metal roofing supplier for our customers. We will accomplish this by offering fast and reliable deliveries, high quality products, an easy and pleasant ordering experience, friendly hands-on technical support, and the best sales tools in the industry. We will achieve this by having the best people in the industry and engaging them to continually improve the customer experience.



MasterRib



MasterRib is our most popular metal roofing panel and is an industry leader in strength and durability. This versatile metal roofing panel features classic looks and is used in a wide range of roofing and sidewall applications, including residential, commercial, post-frame, and agricultural. MasterRib was designed with extra-wide ribs to increase strength and ease handling and installation. Another unique feature of the MasterRib panel is the extra-large siphoning channel on the under-lap rib which provides extra leak resistance in extreme wind and rain loads.

Specifications

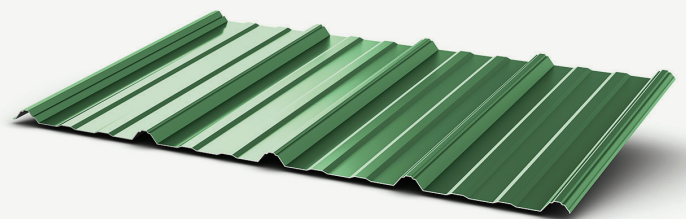
- Exposed fastener panel for roof and wall applications
- 3:12 minimum recommended roof pitch
- Suitable for solid deck or open framing

Substrates and Coatings

- 29 and 26 gauge high strength steel
- Anti-corrosion AZ50 Galvalume® coating for painted and AZ55 for unpainted steel
- Signature® 200 siliconized polyester paint system with 45-year limited warranty coverage

Testing and Approvals

- Miami-Dade Approved for Wind Uplift
- Texas Department of Insurance Approved
- No Coastal Set Back
- UL 580 Class 90 Wind Uplift Construction #584
- UL 790 Fire Resistance Class A
- UL 2218 Impact Act Resistance Class 4
- Texas Department of Insurance Approval #116
- Metal Construction Association (MCA) Certified
- Miami Dade County NOA Available
- Florida Building Code Approved:
 - 7271.5 Min. 29 Ga. 36" Wide over 1" X 4" Furring and 15/32" plywood or 7/16" OSB
 - 7271.6 Min. 29 Ga. 36" wide over 15/32" plywood
 - 7271.7 Min 26 Ga. over 19/32" plywood
 - 9555.3 26 Ga. 36" wide over steel supports
 - 9555.4 29 Ga. 36" wide over steel supports
 - 9555.5 29 Ga. 36" wide over 2" x 2" wood supports
 - 9555.6- 29 Ga. 36" wide over 1" x 4" wood supports
 - 9557.3 29 Ga 36" wide wall panel over steel supports
 - 9557.4-29 Ga 36" wide wall panel over wood supports
 - 20484.5-Min 29 Ga over 15/32" plywood or 7/16" OSB
 - 20484.6-Min 29 Ga. over 15/32" plywood
 - 38458.2 - 26 Ga over 16 Ga steel purlins structural.

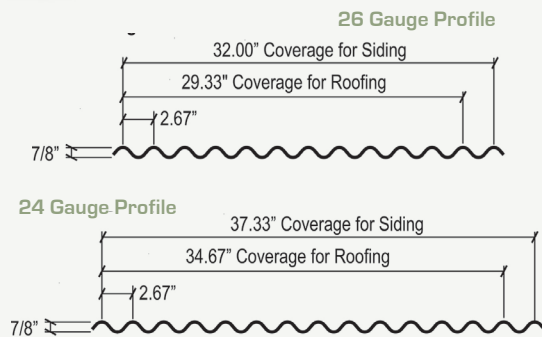
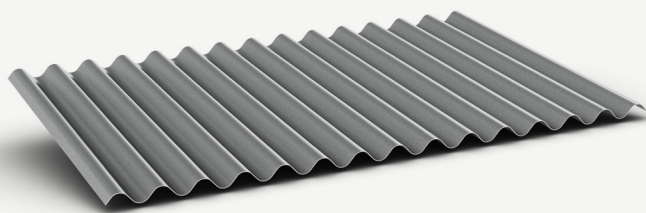
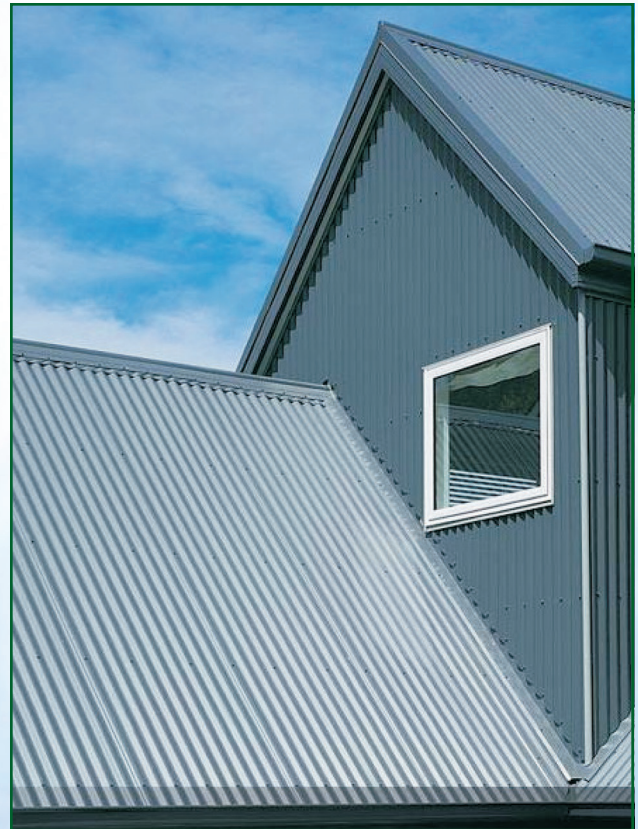


7/8" Corrugated

Designed for commercial, industrial, residential, and steel-framed building applications, the 7/8" Corrugated Panel provides architects and designers a corrugated profile option which can be installed as both a roof and a wall panel. The 7/8" corrugation height creates the structural integrity required to allow installation over a solid substrate or open framing.

Substrates and Coatings

- 26, 24, and 22 gauge (optional) high strength steel
- Anti-corrosion AZ50 Galvalume® coating for painted and AZ55 for unpainted steel
- 26 ga available in Signature® 200 siliconized polyester paint system
- 24 and 22 ga available in Signature® 300 polyvinylidene fluoride paint system



Testing and Approvals

- UL 580 uplift resistance tested
- UL750 fire, class A rating
- UL2218 impact resistance, Class 4
- Florida Building Code Approved:
 - 9555.2-Min 26 Ga. 32" wide (13 Ribs) coverage 29.33" over Min. 26 Ga. 80 KSI steel or Min 24 Ga. 50 KSI Steel.
 - 9555.2-Min. 24 Ga 34.67" wide (14 Ribs) Coverage 32" over Min 26 Ga. 80 KSI steel or Min 24 Ga. Over 50 KSI steel.
 - 9555.2-Min. 24 Ga. 37.33" wide (15 Ribs) coverage 34.33" over Min. 26 Ga. 80 KSI steel or Min 24 Ga. over 50 KSI steel
 - 29467.1-Min 26 Ga. over Min 7/16" OSB or Min 15/32" Plywood.
 - 29467.2-Min 24 Ga._13 Ribs 7/8" high spaced at 2.67" OC coverage 29.33" over 15/32" plywood
 - 29467.2-Min 24 Ga._14 Ribs 7/8" high spaced at 2.67" OC Coverage 32" over 15/32" plywood
 - 29467.2-Min 24 Ga._15 Ribs 7/8" high spaced at 2.67" OC Coverage 34.67" over 15/32" plywood.
- 38458.1 - aluminum panels
- 39290.1 - aluminum panels

ValuRib



ValuRib is an inexpensive, entry-level version of our popular MasterRib metal roofing panel that's meant for use on applications where durability and strength are not as critical. This panel is popular for carports and various shade and shelter applications.

Specifications

- Exposed fastener panel for roof and wall applications
- 3:12 minimum recommended roof pitch
- Suitable for solid deck or open framing

Substrates and Coatings

- 29 gauge high strength steel
- Anti-corrosion galvanized or Galvalume® coating
- ValuRib paint system (limited colors and availability)

**Frost White ValuRib is available only in Janesville, WI - Scranton, PA - and Dayton, OH. Please see a Union sales representative for more information.



1-1/4" & 2-1/2" Corrugated

Corrugated panels are the original metal roofing and siding panels and are a traditional staple in agricultural applications. Today, usage has expanded beyond its rural roofing heritage and they are being increasingly used to add traditional and rustic looks to homes, restaurants, retail establishments, and many other building types.

Specifications

- Exposed fastener panel for roof and wall applications
- 3:12 minimum recommended roof pitch
- Suitable for solid deck or open framing

Substrates and Coatings

1-1/4" Corrugated

- Economy and 29 gauge high strength steel.
- 26 Gauge Bare Galvalume®
- Anti-corrosion galvanized coating

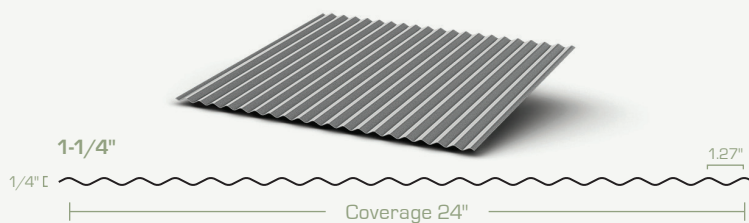
2-1/2" Corrugated

- Economy, 29, and 26 gauge high strength steel
- 24 Gauge Unpainted Galvalume®
- Anti-corrosion AZ50 Galvalume® coating for painted and AZ55 for unpainted steel. Economy grades use a galvanized coating (limited colors available)
- Signature® 200 siliconized polyester paint system with 45-year limited warranty coverage



Testing and Approvals

- Florida Building Code Approved:
 - 7271.1 R-5 Min. 26 Ga. 24" wide over 19/32" APA plywood or min. 3/4" thick wood plank (2 1/2" Corrugated only)





For generations, 5V metal roofing panels have been used on farm buildings and other rural metal roofing projects. Today, many homeowners have recognized that the timeless design is ideal for residential roofs as well. Our 5V metal roofing panels are especially popular in Florida and other coastal areas. Our 5V roof panels are designed with an enhanced “U” over “V” profile to provide maximum leak resistance.

Specifications

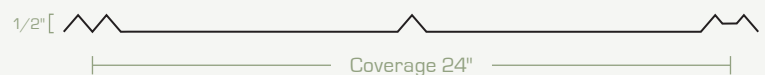
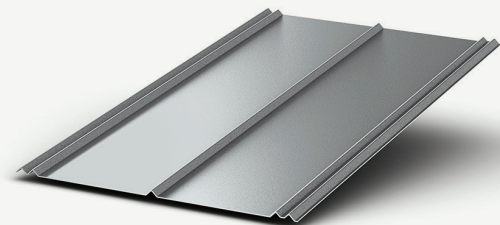
- Exposed fastener panel for roof and wall applications
- 3:12 minimum recommended roof pitch
- Suitable for solid decking or open framing
- Available in 24 Gauge Unpainted Galvalume® (*Ocala only 24 gauge painted)

Substrates and Coatings

- Economy, 29 and 26 gauge high strength steel
- 29 gauge Galvanized
- Anti-corrosion AZ50 Galvalume® coating for painted and AZ55 for unpainted steel. Economy grades use a galvanized coating
- Signature® 200 siliconized polyester paint system with 45-year limited warranty coverage

Testing and Approvals

- Metal Construction Association Certified
- Miami-Dade Approved for Wind Uplift
- Texas Department of Insurance Approved
- Highest UL Ratings for Wind Uplift, Fire and Impact Resistance
- No Coastal Set Back
- UL 580 Class 90 Wind Uplift Construction #579 and #642
- UL 790 Fire resistance Class A
- UL 2218 Impact resistance Class 4
- UL 1897 Uplift Test for Roof Covering
- Texas Department of Insurance Approval #119
- Miami-Dade County NOA 22-0207.02
- Metal Construction Association (MCA) Certified
- Florida Building Code Approved:
 - 7271.2 26 Ga. over 19/32" plywood
 - 7271.3 29 Ga. over 15/32" APA plywood
 - 7271.4 26 Ga. over 19/32" plywood
 - 9555.1 29 Ga. over 1x4 wood furring structural
 - 20484.2 26 Ga. over 15/32" plywood



R/PBR/IR Panel

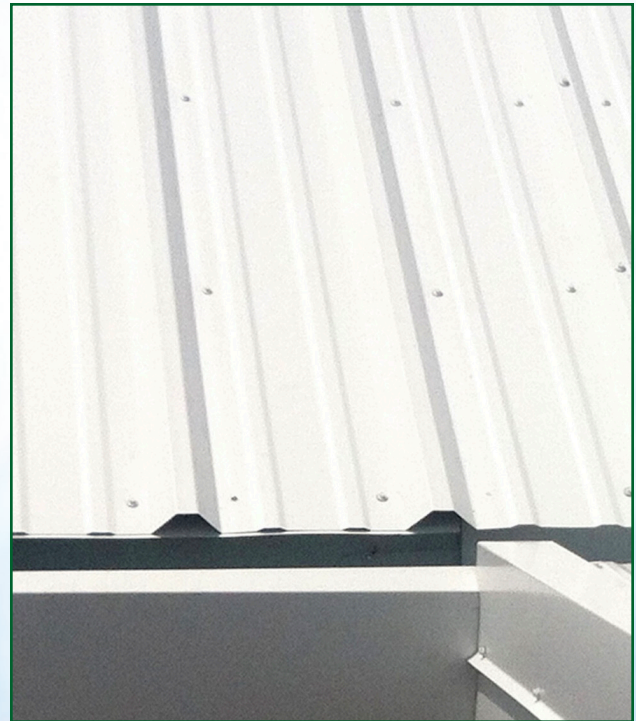
R, PBR, and IR metal roofing panels are designed for industrial, commercial, and steel-frame building applications. The “R” family of metal roofing panels has the strength to perform on roof pitches as low as 1:12 and on spans up to five feet. The R and IR panels are designed for sidewall applications while the PBR panel has an added purlin bearing leg to provide better support for roofing applications.

Specifications

- Exposed fastener panel for roof and wall applications
- 1:12 minimum recommended roof pitch (PBR can go as low as 1:12)
- Suitable for solid deck or open framing

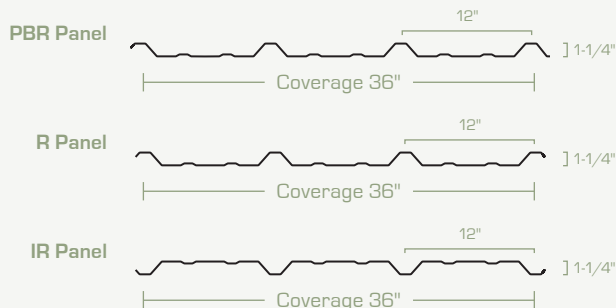
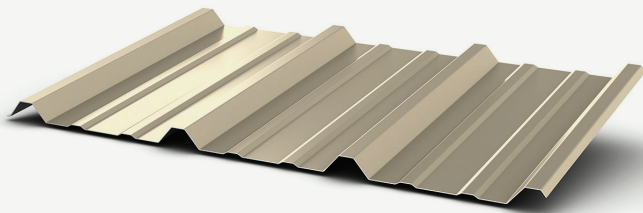
Substrates and Coatings

- 26 and 24 gauge high strength steel
- Anti-corrosion AZ50 Galvalume® coating for painted and AZ55 for unpainted steel
- 26 ga available in Signature® 200 siliconized polyester paint system
- 24 ga available in Signature® 300 polyvinylidene fluoride paint system



Testing and Approvals

- Metal Construction Association Certified
- No Coastal Set Back
- UL 580 Uplift UL 90 Construction #30, 79, 161, 167, and 638
- UL 790 Fire Resistance Class A
- UL 2218 Impact Resistance Class 4
- Florida Building Code Approved:
 - 20484.8 - 26 gauge over 15/32" plywood
 - 9555.8 - 26 gauge over 16 gauge structural steel.
 - 9557.3 R4 - 26 gauge over 16 gauge structural steel (Wall Panel)



M-Panel



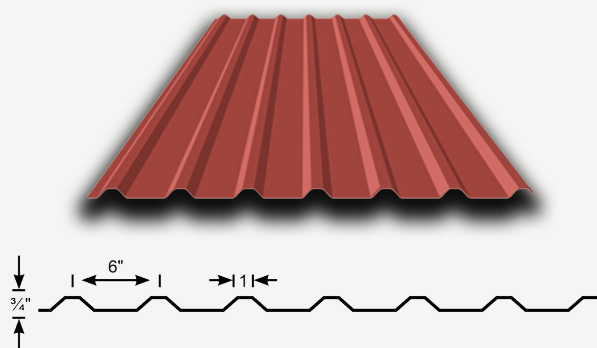
Union's M-Panel is a multi-use panel typically utilized in wall and soffit applications. With 36" of coverage and major ribs 6" on center, M-Panel can be installed both horizontally and vertically. Major ribs spaced 6" on center provide structural support and an aesthetic quality desired by building designers and architects.

Specifications

- Exposed fastener panel for soffit and wall applications
- Suitable for solid deck or open framing

Substrates and Coatings

- Anti-corrosion AZ50 Galvalume® coating for painted and AZ55 for unpainted steel
- 26 ga available in Signature® 200 siliconized polyester paint system
- 24 ga available in Signature® 300 polyvinylidene fluoride paint system



Advantage-Lok II

Standing seam roofs have been used on traditional and contemporary homes for more than a century. Their clean lines and fully concealed fasteners make them a favorite on a wide range of residential and commercial architecture. Our Advantage-Lok II standing seam panel offers low profile 1" high ribs that look great on residential and smaller commercial roofs. Advantage-Lok II uses an integrated screw flange and has ribs that snap securely together without the use of clips to provide an easy installation. Like all of our standing seam panels, Advantage-Lok II has outstanding wind and weather resistance.

Specifications

- Standing seam concealed fastener panel for roof applications
- Snap locking ribs
- Screw flange installation
- 3:12 minimum recommended roof pitch
- Suitable for solid decking

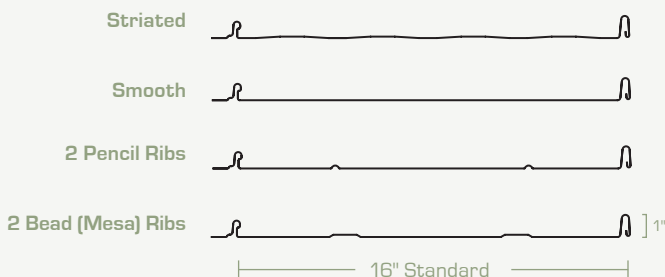
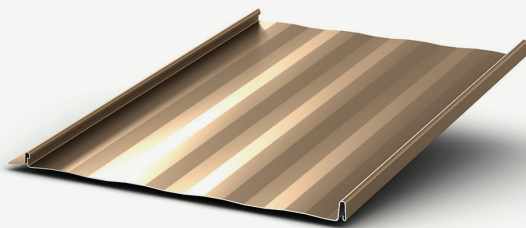
Substrates and Coatings

- 26 and 24 gauge high strength steel
- 0.032" aluminum
- Anti-corrosion AZ50 Galvalume® coating for painted and AZ55 for unpainted steel
- 26 ga available in Signature® 200 siliconized polyester paint system
- 24 ga and aluminum available in Signature® 300 polyvinylidene fluoride paint system



Testing and Approvals

- Metal Construction Association Certified
- No Coastal Set Back
- UL 790 Fire Resistance Class A
- UL 2218 Impact Resistance Class 4
- UL 580 Uplift UL Class 90 Construction #529
- Florida Building Code Approved:
 - 20484.2-Min 26 Ga. 16" wide over 7/16" OSB and 15/32" plywood
 - 20484.3-Nom. 0.032 Aluminum over 7/16" OSB or Min 15/32" plywood



SL150



SL150 is a snap lock standing seam roof panel with 1.5" high ribs that installs with concealed clips. The clips allow the panel to freely expand and contract during thermal movement which can help ensure an aesthetically pleasing look when very long panel lengths are required. SL150 is popular in both residential and commercial applications and is a great choice for customers that prefer a taller rib profile or for roofs requiring very long panel lengths.

Specifications

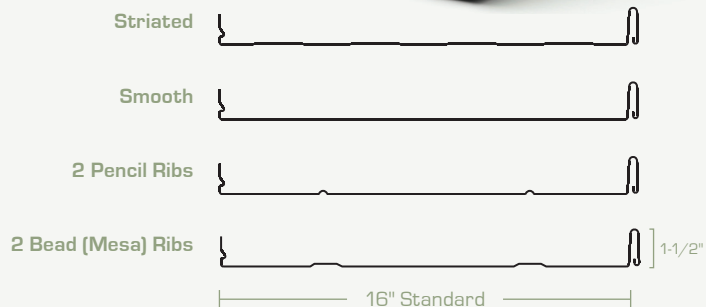
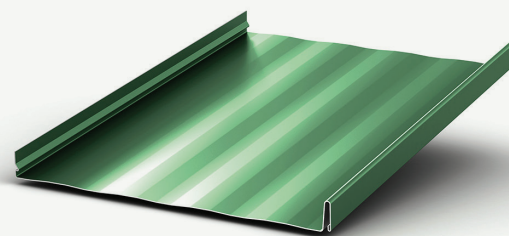
- Standing seam concealed fastener panel for roof applications
- Snap locking ribs
- Installs with clips
- 3:12 minimum recommended roof pitch
- Suitable for solid decking

Substrates and Coatings

- 26 and 24 gauge high strength steel
- 0.032" aluminum
- Anti-corrosion AZ50 Galvalume® coating for painted and AZ55 for unpainted steel
- 26 ga available in Signature® 200 siliconized polyester paint system
- 24 ga and aluminum available in Signature® 300 polyvinylidene fluoride paint system

Testing and Approvals

- Florida Building Code High-Velocity Hurricane Zone Approved (Covers Miami-Dade Approval)
- Highest UL Ratings for Wind Uplift, Fire, and Impact Resistance
- Metal Construction Association Certified
- No Coastal Set Back UL 580 Construction #589
- UL 2218 Impact Resistance Class 4
- UL 790 Fire Resistance Class A
- ASTM E-283 Air
- ASTM E-331 Water
- Florida Building Code Approved:
 - 9443.2 - 24 gauge over 15/32" plywood
 - 20484.4-R2 - 0.032" Aluminum over 15/32" plywood
 - 39390.3 24 gauge over metal deck



SL175

SL175 is a snap lock standing seam panel with 1.75" high ribs that can be used for architectural and light structural applications. The panel is secured with concealed clips and ribs that lock securely together. SL175 can be specified as an accent feature or a total roof system for schools, shopping centers, banks, hotels, offices, and a variety of other applications.

Specifications

- Standing seam concealed fastener panel for roof applications
 - Snap locking ribs
 - Installs with clips
 - 1:12 minimum recommended slope
 - Suitable for solid deck
 - Applicable for installations requiring weathertightness warranties
 - .040 and 22 gauge
- *Extended lead times and minimum quantities apply

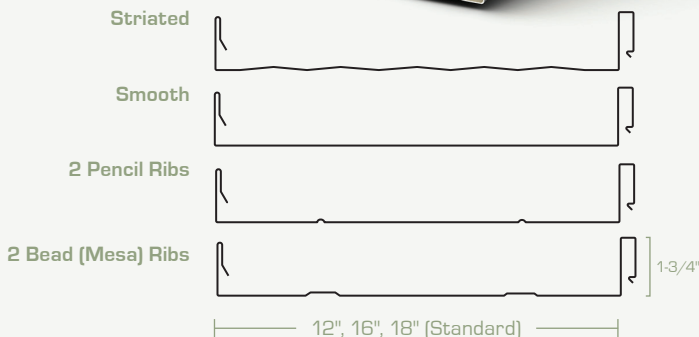
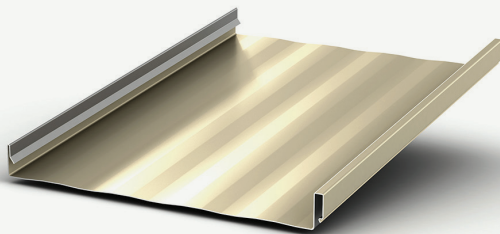
Substrates and Coatings

- 24 and 22 gauge high strength steel
- 0.032" and 0.040" aluminum
- Anti-corrosion AZ50 Galvalume® coating for painted and AZ55 for unpainted steel
- Available in Signature® 300 polyvinylidene fluoride paint system



Testing and Approvals

- ASTM E-1592 Wind Uplift
- ASTM E-1646 Water Infiltration
- ASTM E-1680 Air Leakage
- UL-90 Wind Uplift 254, 255, 303, 343, 414, 508, 508A
- UL 790 Class A Fire Resistance
- UL 2218 Impact Resistance Class 4
- Florida Building Code Approved:
 - 7271.9-R5-24 ga. over 22 ga. B decking
 - 29467.4-R1-0.032 aluminum over 15/32" plywood
 - 32186.3-R1-0.032 aluminum over 15/32" plywood
 - 20484.9-R2-24 ga. over 15/32" plywood



ML150



Testing and Approvals

- UL-90 Wind Uplift 512, 512A, 588, 603, 604, 605, 656, 658, 663
- UL 790 Class A Fire Resistance
- UL 2218 Impact Resistance Class 4
- ASTM E-283 Air and E-331 Water
- ASTM E-1592
- Florida Building Code Approved:
 - 32186.1 – 0.032" Alum. (max. 16.5" wide) ML150 over 15/32" Plywood
 - 38102.1 – Min. 24g (max. 16.5" wide) ML150 to min. 16g Purlins
 - 39390.2 – Min. 24g (max 16.5" wide) ML150 to min. 22g Metal Deck
 - 41572.1 – 0.032" Alum. (max. 16.5" wide) ML150 to min. 16g Purlins
 - 20484.7-24 Ga. over 15/32" plywood

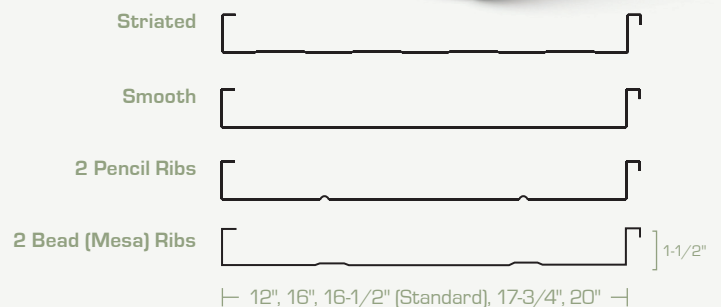
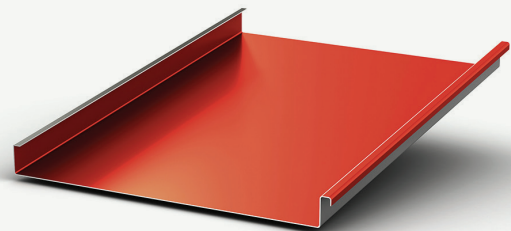
ML150 is a mechanically seamed standing seam panel for architectural applications. The panel has 1.5" high ribs and is secured with concealed clips and the ribs are locked together using a rooftop seaming machine. ML150 is typically specified as an accent feature for schools, shopping centers, banks, hotels, offices, and a variety of other applications.

Specifications

- Standing seam concealed fastener panel for roof applications
- Mechanically seamed
- Installs with clips
- 1:12 minimum recommended roof pitch
- Suitable for solid deck
- Applicable for installations requiring weathertightness warranties

Substrates and Coatings

- 24 gauge high strength steel
- 0.032" aluminum
- Anti-corrosion AZ50 Galvalume® coating for painted and AZ55 for unpainted steel
- Available in Signature® 300 polyvinylidene fluoride paint system



ML200

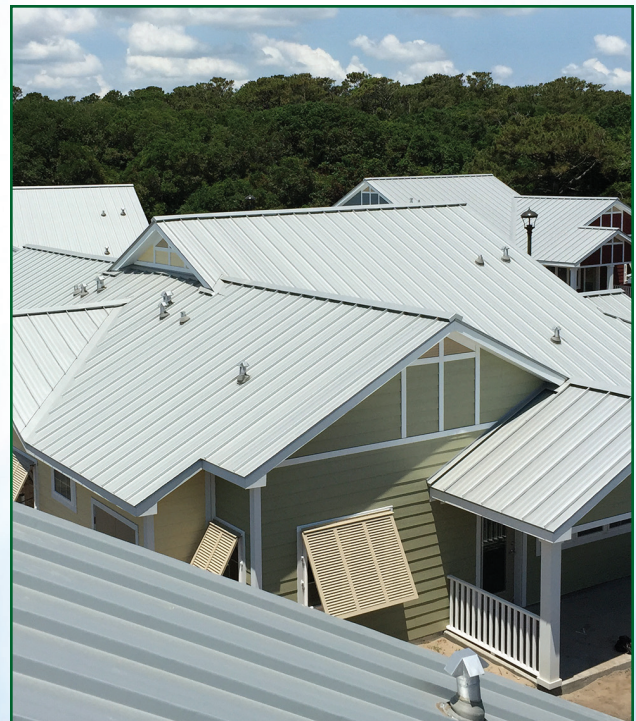
ML200 is a mechanically seamed standing seam panel with 2" high ribs that can be used for structural or architectural applications. The panel is secured with concealed clips and the ribs are locked together using a rooftop seaming machine. This type of standing seam system provides very high wind uplift resistance and structural integrity. ML200 can be specified as an accent feature or a total roof system for schools, shopping centers, banks, hotels, offices, and a variety of other applications.

Specifications

- Standing seam concealed fastener panel for roof applications
 - Mechanically seamed
 - Installs with clips
 - 1/2:12 minimum recommended roof pitch
 - Suitable for solid deck or open framing
 - Applicable for installations requiring weathertightness warranties
 - .040 and 22 gauge
- *Extended lead times and minimum quantities apply

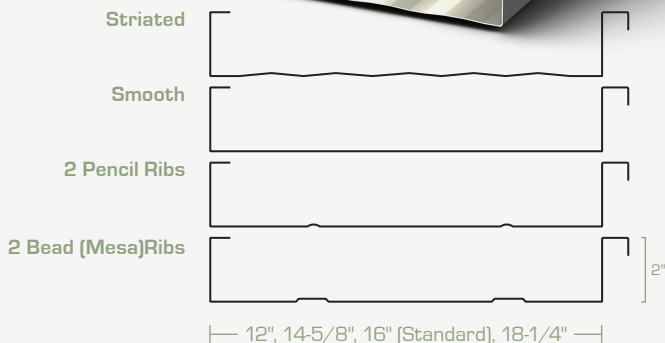
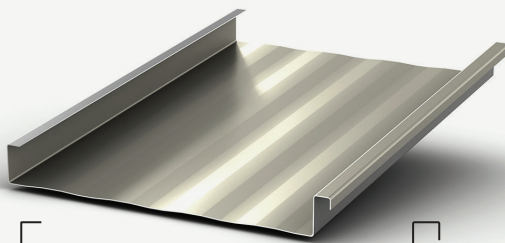
Substrates and Coatings

- 22 and 24 gauge high strength steel
- 0.032" and 0.040" aluminum
- Anti-corrosion AZ50 Galvalume® coating for painted and AZ55 for unpainted steel
- Available in Signature® 300 polyvinylidene fluoride paint system



Testing and Approvals

- ASTM E-1592 Wind Uplift
- ASTM E-1646 Water Infiltration
- ASTM E-1680 Air Leakage
- ASTM E-2140 Hydrostatic Head Resistance
- UL-90 Wind Uplift 90, 176, 180, 238, 238A
- UL 2218 Impact Resistance Class 4
- UL 790 Class A Fire Resistance
- Florida Building Code Approved:
 - 7271.8-R5-24 Ga. over 22 Ga. decking
 - 9555.7-R5-24Ga. over 16 Ga. steel section
 - 30502.1-R1-Nom.0.032 aluminum over 15/32" plywood
 - 32186.2-R1-Nom. 0.040 aluminum over 15/32" plywood (HVHZ)
 - 32912.1-R0- 24 Ga over 15/32" plywood (HVHZ)
 - 32912.2-R0-24 Ga. over 22 Ga. B decking
 - 37328-R0-Nom. 0.032 aluminum over 15/32" plywood (HVHZ)



TS-324™

Trapezoidal Panel



The TS-324™ Trapezoidal Panel is a structural metal roofing panel which provides superior wind and weather protection under all roof loading conditions. Typically installed over open framing, the trapezoidal profile maintains its structural integrity with a panel coverage of 24". The Trapezoidal Panel's 1/4":12 minimum slope recommendation is the lowest of all metal roofing profiles offered by Union.

Specifications

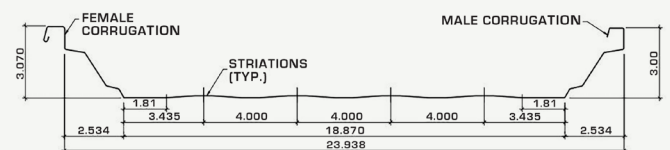
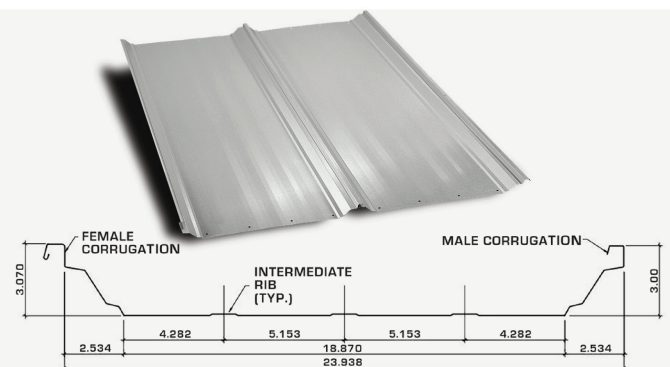
- Trapezoidal standing seam panel utilizing sliding clips and structural accessories for roof applications
- Mechanically seamed ribs
- Minimum slope recommendation= 1/4":12
- Suitable for solid decking or open framing

Substrates and Coatings

- 24 and 22 gauge high strength steel
- Anti-corrosion AZ50 Galvalume® coating for painted and AZ55 for unpainted steel
- 26 ga available in Signature® 200 siliconized polyester paint system
- 24 and 22 ga available in Signature® 300 polyvinylidene fluoride paint system

Testing and Approvals

- ASTM E-1592 Wind uplift
- ASTM E-1646 Water Infiltration
- ASTM E-1680 Air Leakage
- ASTM E-2140 Hydrostatic Head Resistance
- Florida Building Code Approved:
 - 9555.9-R5- Min. 24 Ga. or 22 Ga. over 16 Ga. steel section



FL100

FL100 is a versatile panel that can be used on commercial and residential applications. The panel can be installed in a soffit application or vertically as a wall panel. Venting is available when used as a soffit panel. The interlocking mechanism allows for rapid installation and provides a flush appearance with completely concealed fasteners.

Specifications

- Soffit and wall panel
- Suitable for solid substrate or open framing

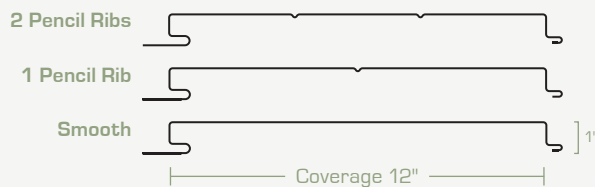
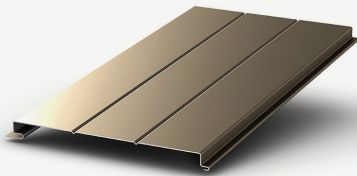
Substrates and Coatings

- 26 and 24 gauge high strength steel
- 0.032" aluminum
- Anti-corrosion AZ50 Galvalume® coating for painted and AZ55 for unpainted steel
- 24 ga and aluminum available in Signature® 300 polyvinylidene fluoride paint system
- 26 ga available in Signature® 200 siliconized polyester paint system



Testing and Approvals

- Florida Building Code Approved:
 - 9557.2 R5 12" wide, 24 Ga. or 0.032 Aluminum over (min) 16 Ga. min. 50 KSI Steel Support



Warranties

We stand behind our products with the best warranty protection in the industry. Our broad range of substrates and paint systems has a wide selection of warranties to suit the needs of your application and ensure you have years of trouble-free service. We use industry-leading SMP (Siliconized Modified Polyester) and commercial grade PVDF (Polyvinylidene Fluoride) paint systems that are coated on premium quality Galvalume® steel for outstanding fade, chalk, and corrosion resistance. Our new aluminum panels utilize our commercial grade PVDF paint system and are suited for those looking for the best in long-term corrosion resistance, especially in coastal areas.

Our painted metal panels are Cool Roof compliant through the CRRC-1 Program. For additional details about the benefits of Cool Roof materials, please visit coolroofs.org.

	MasterRib	ValuRib	7/8" Corrugated	2-1/2" Corrugated	1-1/4" Corrugated	5V	Advantage-Lok II	SL150	SL175	ML150	ML200	FL100	M Panel	TS-324
45 Year Signature® 200 SMP Limited Paint Warranty	■		■	■	■	■	■	■				■	■	
45 Year Signature® 300 PVDF Limited Paint Warranty**			■				■	■	■	■	■	■	■	■
20 Year Galvalume® Limited Warranty	■		■	■	■	■	■	■	■	■	■	■	■	■
Non-Warranty Commodity Panel		■												

**Applicable to 22 and 24 gauge steel.

Metal Roofing System Components

We offer a full selection of system components required to complete your roof or building and to ensure years of trouble-free service.

System Components and Accessories

Synthetic Underlayment—REPEL/REPEL II



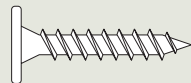
DripStop Condensation Control



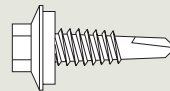
Wood Screws



Pancake Head Wood Screws



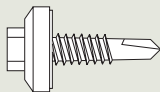
Lap Tek Screws



Ultimate Lifetime Warranty Wood Screws



Ultimate Lifetime Warranty Lap Tek Screws



Foam Closures



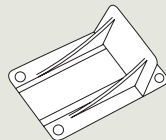
Emseal Expandable Closure



Standard, High Temp, and Retrofit Pipe Boots



Snow Guards

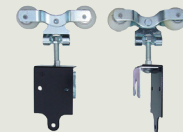


Polycarbonate Skylight Panels



Talk to your Union sales representative should you need any other components.

Cannonball Door Hardware



Roof Edges and Flashing



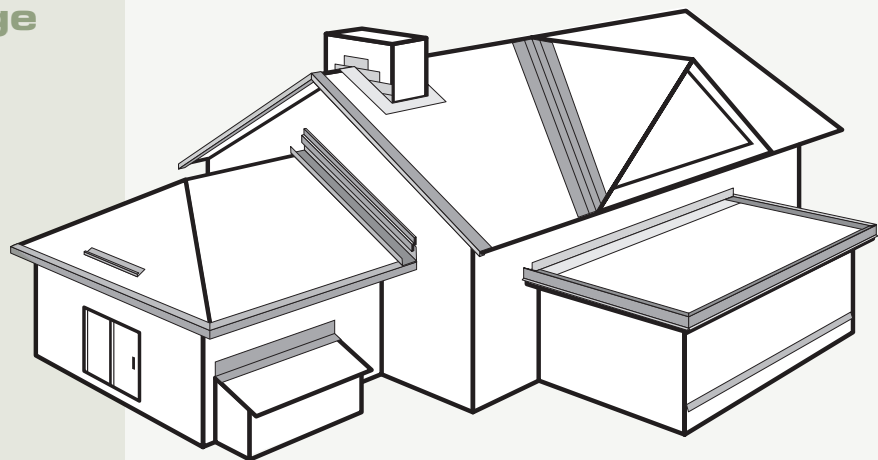
Ask your Union sales representative for a copy of our Drip Edge and Flashing Catalog.

Do you sell asphalt shingles? Save money by combining your flashing and roof edge shipments with your metal roofing orders.

We offer a large selection of drip edges, roll flashing, step flashing, and other roof components designed to protect your roof against water infiltration. These products are available in various colors and materials—including aluminum, steel, vinyl, copper and lead.

Our Drip Edge and Flashing Catalog gives you the additional information you need, including sizes, colors, and more. Look for these products to help guard against water infiltration.

- Drip Edges
- Drip Caps
- Step Flashing
- Angle Flashing
- Preformed Valley
- Z Flashing
- Shingle Endwall Flashing
- Window/Door Cap
- Vinyl Ledger Board
- Gutter Apron
- Rain Diverter



Pre-engineered Metal Buildings

Union now manufactures custom designed pre-engineered metal buildings for commercial, industrial, and residential applications. We can supply a complete package with factory welded, identified, marked, and pre-punched parts. All kits include a full set of easy to use erection drawings.



- Engineer stamped plans designed to meet local codes
- Clearspan buildings
- Straight or tapered flanged beams in custom widths and lengths
- 26 or 24 gauge premium mill certified steel
- Up to 30' bays
- Certified vinyl-reinforced and low-E insulation available
- Overhead crane ready haunches
- Delivery and unloading services
- Full range of accessories, doors, and other options
- Fastest deliveries in the industry
- IAS Certified manufacturing

Pre-engineered Metal Buildings

Primary Steel Frame Options

For ultimate design flexibility your metal building can be designed to your desired dimensions and requirements. Clear Span and Multi-Span options are available to meet your needs. Other benefits are:

- Offers the capability for innovative designs and special applications
- All frame options can be designed for either bypass or flush wall girts
- Available with tapered or straight columns

Clear Span Frame

When you need large open spaces the Clear Span frame is the choice. It can be designed in symmetrical and asymmetrical configurations. Offers the capability for innovative designs and special applications.

Multi-Span Frame

The Multi-Span frame is available in gable or single slope options. The interior columns provide multiple spans across wider buildings. This can be a more economical option on building widths of 80' and greater when interior columns are acceptable.

Single Slope Frame

The Single Slope frame is available as clear span or multi-span. This is a flexible solution that offers the roof to slope in one direction. If there are drainage restrictions this can be an excellent option. Facades and parapets can be used to give the appearance that all surrounding walls are the same height.

Lean-To Frame

The Lean-To frame joins to, and is supported by, a main frame column. It is an economical way to extend or expand the square footage of an existing or new building. Leave the walls open to achieve a covered area span. This is a flexible solution that offers the roof to slope in one direction. If there are drainage restrictions this can be an excellent option. Facades and parapets can be used to give the appearance that all surrounding walls are the same height.

Secondary framing options are available, see a Union Sales Representative for additional details.



Straight Columns



Tapered Frames



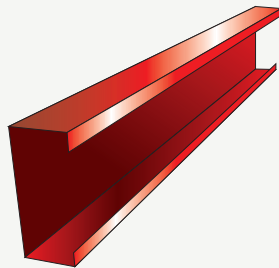
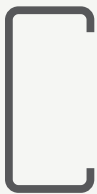
Metal Building Components

Union now offers a full range of secondary structural framing components including Cees, Zees, Receiver Channel and Eave Struts in custom lengths to reduce field cutting. These components are available in standard punch patterns or can be custom slotted or punched to reduce field drilling.

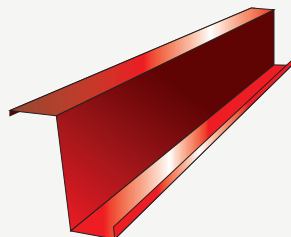
- C and Z purlins
- Receiver Channel
- Eave Struts
- Base Angle
- Hat Channel
- 12, 14, and 16 gauge
- Red Oxide or galvanized



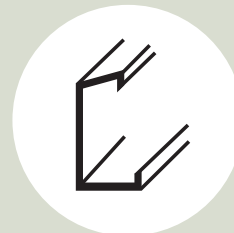
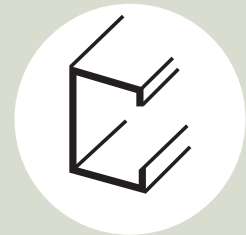
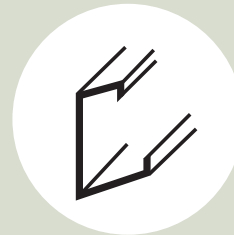
C-Purlin



Z-Purlin



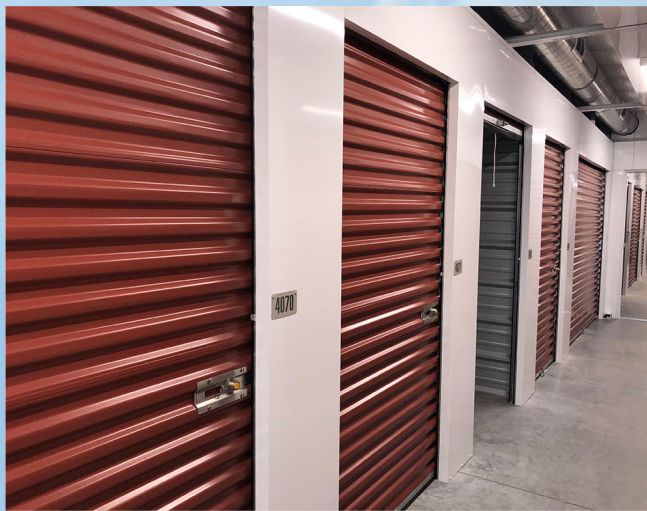
Eave Struts



Mini Storage Solutions

Union now offers a full range of mini-storage solutions along with in-house technical and engineering support to help you design the building you need.

Call your Union sales representative to get connected to one of our mini storage experts!



- Full range of climate control, boat and RV, and open canopy units
- In-house engineering and drafting services
- Layout and design assistance available
- Commercial and self-storage roll-up doors in assorted colors
- Insulation packages to meet R-value needs
- Over 20 colors to choose from



MasterQuote Online Order System

MasterQuote is an advanced online system that allows you to easily generate estimates, price jobs, create custom quotations, and enter orders.

Features Include

Online Pricing Database

Your secure login gives you access to your current pricing for all Union products. No need to call the plant for price confirmation.

Customized Quoting

The quoting feature allows you to create customized quotations for your customers that even incorporate your logo. You can choose how much to mark-up your quote and whether to show itemized or lump-sum pricing.

Easy Online Ordering

Once you're ready to order there's no need to re-create your work or fax anything to the plant. Simply retrieve the quote you're ready to order and click "Submit Order".

No Software to Download

MasterQuote is a cloud-based program which means there's no software to download and you can access it anywhere you have an internet connection, even on mobile devices.

Unlimited Users

You can set up accounts for as many people as you like. All you need are unique e-mail IDs for each user.

FastQuote Budgetary Estimate Tool

Allows you to quickly generate budgetary estimates for the total price of a metal roofing package based on square footage and roof complexity.

Estimating

Pricing

Quoting

Ordering

The screenshot displays the MasterQuote interface with a quote for roofing installation. The quote includes a list of items with their part numbers, quantities, and prices. A summary table at the bottom shows the total price for the quote.

Line	Part Number	Ordered	Price	Total
1	98008292703 FastQuote 29 gauge Terracotta Red 27ft. 3in	17	\$ 62.14	\$1,056.38
2	98008292803 FastQuote 29 gauge Terracotta Red 21ft. 3in	12	\$ 53.02	\$ 636.24
3	98008293103 FastQuote 29 gauge Terracotta Red 21ft. 3in	16	\$ 73.26	\$1,144.16
4	98008293203 FastQuote 29 gauge Terracotta Red 21ft. 3in	10	\$ 37.94	\$ 379.40
5	98008293303 FastQuote 29 gauge Terracotta Red 21ft. 3in	4	\$ 21.14	\$ 84.56
6	98008293403 FastQuote 29 gauge Terracotta Red 21ft. 3in	4	\$ 21.14	\$ 84.56
7	98008293503 FastQuote 29 gauge Terracotta Red 21ft. 3in	4	\$ 21.14	\$ 84.56
8	98008293603 FastQuote 29 gauge Terracotta Red 21ft. 3in	4	\$ 21.14	\$ 84.56
9	98008293703 FastQuote 29 gauge Terracotta Red 21ft. 3in	4	\$ 21.14	\$ 84.56

Summary Table:

Part Number	Panel Type	Group	Color	Qty	Unit Price	Total Price
98008292703	FastQuote	29 gauge	Terracotta Red	17	\$ 62.14	\$1,056.38
98008292803	FastQuote	29 gauge	Terracotta Red	12	\$ 53.02	\$ 636.24
98008293103	FastQuote	29 gauge	Terracotta Red	16	\$ 73.26	\$1,144.16
98008293203	FastQuote	29 gauge	Terracotta Red	10	\$ 37.94	\$ 379.40
98008293303	FastQuote	29 gauge	Terracotta Red	4	\$ 21.14	\$ 84.56
98008293403	FastQuote	29 gauge	Terracotta Red	4	\$ 21.14	\$ 84.56
98008293503	FastQuote	29 gauge	Terracotta Red	4	\$ 21.14	\$ 84.56
98008293603	FastQuote	29 gauge	Terracotta Red	4	\$ 21.14	\$ 84.56
98008293703	FastQuote	29 gauge	Terracotta Red	4	\$ 21.14	\$ 84.56

Page Total: \$2,593.20

MetalPro Contractor Program



Our MetalPro program is the #1 Metal Roofing Contractor Network in the U.S., providing a high level of customer service, promoting the benefits of metal roofing, and using high quality, manufacturer recommended installation techniques and materials. MetalPro contractors have access to many benefits designed to help them grow their business and distinguish themselves from the competition.

8,800
homeowners

use the Contractor
Finder each year

Over 1,000
members

Email:
metalproinstitute@cornerstone-bb.com
for additional information

Program Benefits

Factory Training

Receive installation training for through-fastened and screw flange standing seam products. After attending, you can be listed on our Website Contractor Finder.

Sales Leads

Union's Contractor Finder receives inquiries each month, which generates hundreds of qualified leads.

Rewards

Receive a rebate on your first order and reward dollars for your Union metal roofing purchases.

Sales Tools

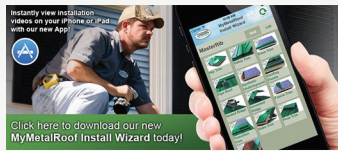
Receive display boards, color samples, technical catalogs, etc. that you can use after your training session is over.

Awards and Recognition

Annual awards given for various categories regarding contractor performance.

Helpful Tools: Videos and Apps

At Union, we've used our technical expertise to develop some of the most helpful installation tools in the industry. We are the only major manufacturer of metal roofing that carries the applicable roofing contractor licensing for every state we do business in, ensuring that we have the latest codes and techniques. Providing these tools is another way we have focused on our mission of being the most convenient supplier to our customers.



MyMetalRoof Install Wizard App

Download our free app for iPhone or iPad from our website or through the iTunes App Store. The app lets you view and download all of our installation videos on your mobile device.



MyMetalRoof Visualizer App

Union's Visualizer App is the most advanced in the industry, using state-of-the-art image mapping integrated into the iPad touch screen technology—taking the guesswork out of your roof choices before you buy. Our Visualizer App lets you visualize your home with a metal roof quickly and easily. Simply upload a photo of your home, follow the directions, and you can see what your home will look like with Union's full range of metal roof styles and colors. Download our free app for iPad from our website or through the iTunes App Store.

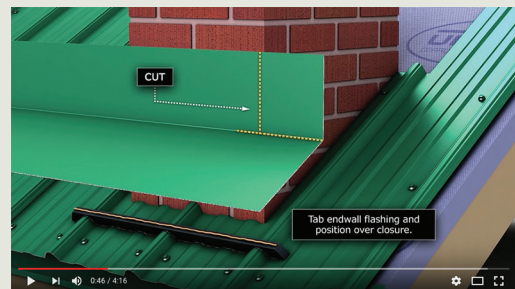
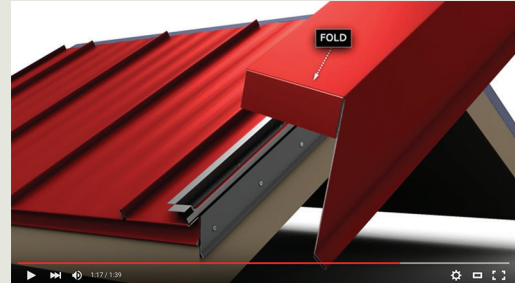


Interactive Visualizer Tool

unioncorrugating.com

Features include

- 3D Viewer
- First in Industry Before/After Viewer for side-by-side comparison/slider
- Users can sample projects or upload their own image(s) for the purposes of applying roofing, siding, and trim to exterior building/home scenes
 - All colors and 3D panel types included
 - Create a Design Report Option Available



Installation Videos

Union's 3D digitally animated installation videos take you through every step of the installation process and are broken down into easy-to-follow segments. They can be viewed both on our website and on YouTube.



Metal Roofing, Metal Panels, and Metal Building Solutions for residential, commercial, and agricultural markets

Manufacturing facilities strategically located for **FAST** and **RELIABLE SERVICE**

Ocala, FL

490 Oak Rd.
Ocala, FL 34472
800-331-3584

Vicksburg, MS

1463 Interplex Circle
Ceres Industrial Complex
Vicksburg, MS 39183
888-661-0577

Dayton, OH

625 N. Third St.
Tipp City, OH 45371
877-615-9812

Morrison, TN

7747 Manchester Hwy
Morrison TN 37357
931-668-4393

Janesville, WI

3920 Kennedy Rd.
Janesville, WI 53545
877-615-9812

Tifton, GA

3365 US Hwy 41 S.
Tifton, GA 31794
800-962-9131

Fayetteville, NC

701 S. King St.
Fayetteville, NC 28301
888-685-7663

Scranton, PA

100 Keystone Industrial
Park Rd. Ste. 2B
Dunmore, PA 18512
570-383-2847

Orange, VA

12435 James Madison
Orange, VA 22690
800-762-6785



*Your Roof. For Life!
On Time and Complete!™*